

INTERIOR DESIGN[®]

NUMBER 13



market
tabloid celebrating 75 years





Dessin Fournir

Playing on the bold geometries of the early 20th century, Palmer Hargrave's **Ivan** table lamp gives modern form to old-fashioned craftsmanship. Each base is handcrafted from solid brass. Select from linen, ivory, and silk-white shades and 11 metal finishes, from polished nickel and matte black to antique verde and gunmetal. 308 West Mill, Plainville, KS 67663; 785-434-2011; palmerhargrave.com.

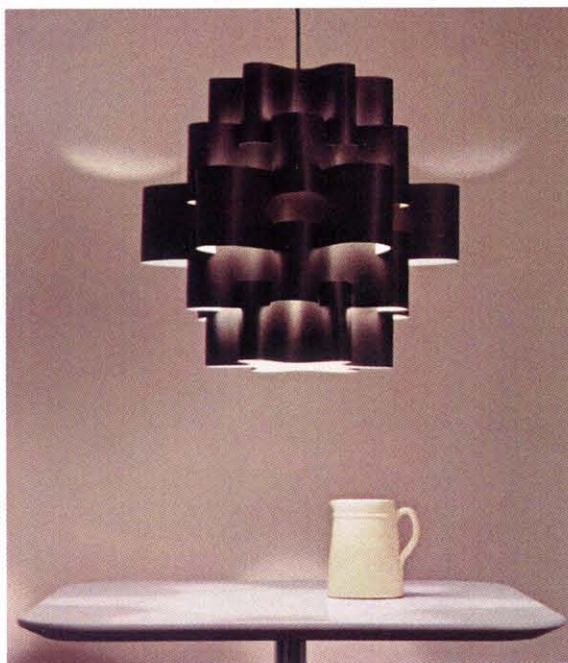
circle 760



Karboxx

Light and carbon aren't just the building blocks of life, but of this hanging lamp, as well. Thin sheets of carbon fiber (or, alternatively, white synthetic resin) slot together to create the elegantly scalloped multi-tier shade.

Also offered in table and floor lamp versions. Lepere, 20 West 22nd Street, Suite 1105, New York, NY 10010; 212-488-7000; lepereinc.com. circle 763



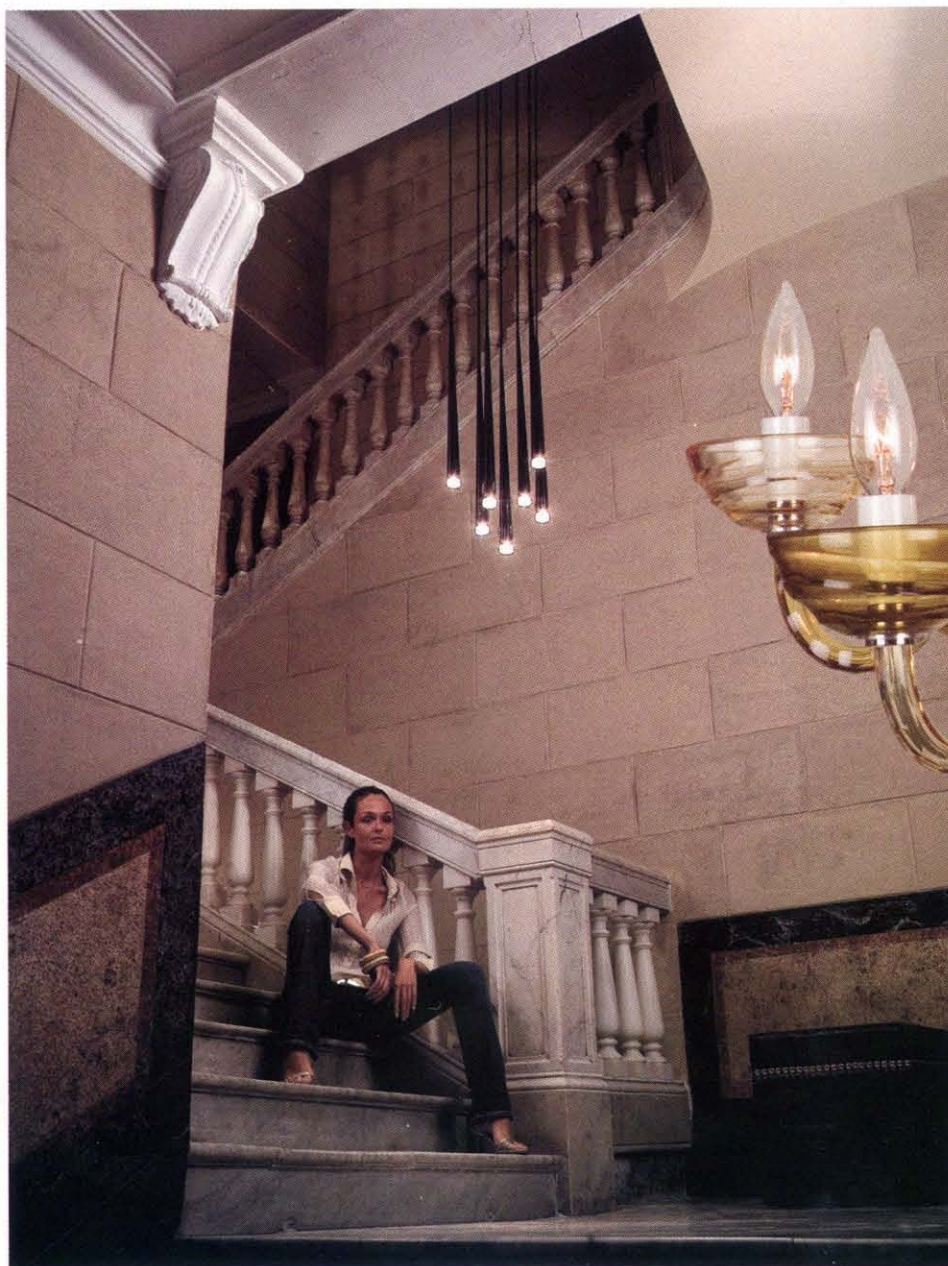
Waterford Wedgwood

With its glass globes cut with orbital patterns, the lead crystal **Cosmic** chandelier is simply out of this world. It comes in six- and nine-light versions and in olive or amber colorways with three gradating hues or clear crystal. 1330 Cambridge Parkway, Wall, NJ 07719; 732-938-5800; waterford.com. circle 761



Vibia

The **Slim** light merges pendant and power cord in one elegant form. In black or white lacquer and measuring just 1½ inch at its mouth, the conical fiber-glass shade tapers almost seamlessly into the power cord, while its borosilicate glass diffuser emits a warm light. Choose from single-light versions or clusters of four or seven. 272 Fernwood Avenue, Edison, NJ 08837; 732-417-1700; vibialight.com. circle 762



Bright Chair

Van updates lounge seating by crossing a classic wing chair with modern attitude. The piece is sleek and tailored, with a tight back and down head pillow and seat cushion. Wood arms are optional, in brown mahogany or 12 other finishes. The frame is solid American cherry from sustainable forests, and the foam-fill is a by-product of petrochemical processing. 51 Railroad Avenue, Middletown, NY 10940; 888-524-5997; brightchair.com. **circle 465**



Michael W. Dreeben

The **Billet** chaise longue is a marvel of sleek minimalism in fiberglass and aluminum. Its gentle undulations measure 64 inches long, 29 inches wide, and 31 inches high and are available in Cactus/Lithium White, Fjord Blue, Bumblebee Yellow, Amish Brown, Charcoal, and ASCI Red. 2002 West Chicago Avenue, Suite 190, Chicago, IL 60622; 773-394-5761; dreeben.com. **circle 461**

Dune

Nothing but **Nett**. Formed of a creatively cut colored nylon and fiberglass shell, this sexy stacker was made with an eye to preventing rainwater from settling. It comes with a sled base or four-leg base, both chrome-plated epoxy finished in stainless or high-tensile steel. The shell is available in green/yellow, white, and dark gray. It is 31¾ inches high, 19¾ inches wide, and 20¾ inches deep. 88 Franklin Street, New York, NY 10013; 212-925-6171; dune-ny.com. **circle 462**



Viccarbe Hábitat

Shape brings whimsy and style to the lowly stool. With two models formed like an angular eggcup and martini glass, there's plenty of visual interest to go around. The fiberglass-and-fiberboard pieces are 17¾ inches high and 15 inches in diameter. Get them in high-gloss lacquer in black, smoke gray, white, pistachio green, or red. Lepere, 20 West 22nd Street, Suite 1105, New York, NY 10010; 212-488-7000; lepereinc.com. **circle 464**

Jane Hamley Wells

The **Elena** chair takes its cues from the fluid lines of the seated human form. The indoor-outdoor stackable seat offers benefits beyond its grace: skid base, four legs, armchair, swivel, and a bench system. It measures 32½ inches high, 23 inches wide, and 20¾ inches deep. The seat is available in white polypropylene or upholstered in six standard options or customer's own material. 1608 North Milwaukee Avenue, Suite 812, Chicago, IL 60647; 773-227-4988; janehamleywells.com. **circle 463**

